

Arch Environmental Equipment, Inc. SIMPLICITY SLIDER SYSTEM

INSTALLATION INSTRUCTIONS

***SHUT DOWN AND LOCKOUT CONVEYOR BEFORE
PERFORMING ANY MAINTENANCE***

STEP 1

Locate the position where the Simplicity Slider System will be installed.

STEP 2

Remove the wing rolls in the existing idlers where the slider system will be installed.
(See Fig. 1)

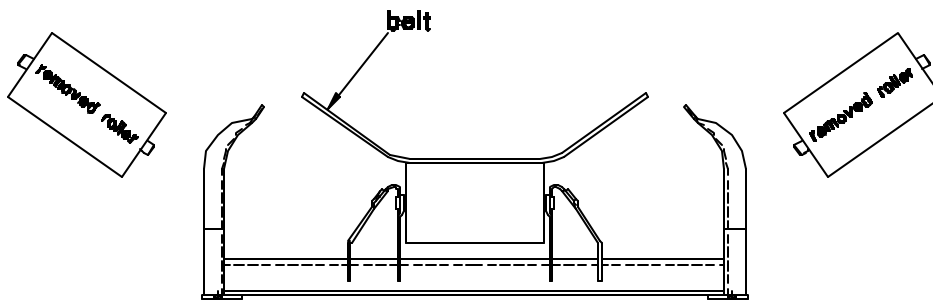


Fig. 1

STEP 3

Once the rollers have been removed, replace them with the Simplicity Slider Roller Replacement Inserts. These inserts should be installed where the slots are closest to the belt. The open end of the slot needs to face opposite the direction of the belt travel.
(See Fig. 2)

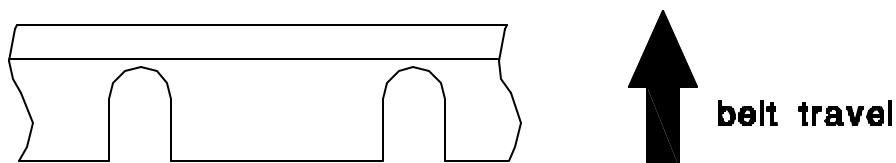


Fig. 2

STEP 4

After the inserts have been installed, the bars must be bolted to them. Use the T-Bolts that are furnished with the slider system. When tightening the T-Bolts, make sure the flat portion is up in the bar and rotated so the T-Bolts will not fall out. (See Fig. 3)

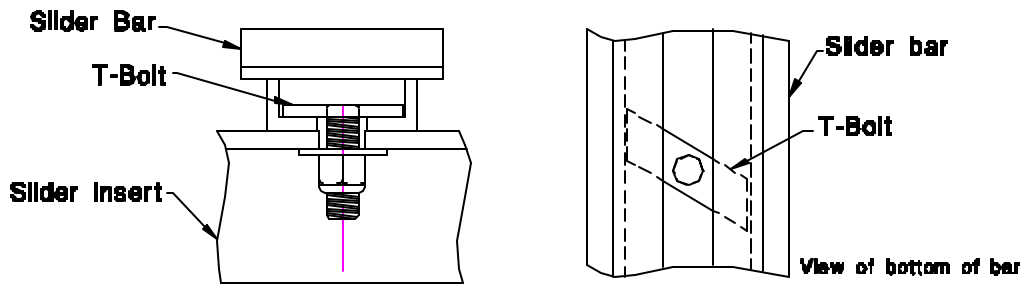


Fig. 3

STEP 5

When complete, the Simplicity Slider System should look something like the diagram below (end view shown). (See Fig. 4)

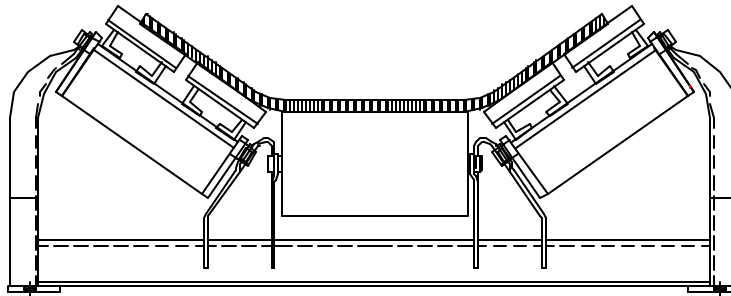


Fig. 4



P.O. Box 1760 5929 Benton Road Paducah, KY 42002-1760
 1-800-553-4567 / 270-898-6821 Fax: 1-800-230-9462 / 270-898-8061
<http://www.aeec.com>