

**ARCH SABER PRIMARY CLEANERS
REMOVE CARRYBACK AT THE HEAD
PULLEY AND ALLOW THE
MATERIAL TO FALL INTO THE BULK FLOW**





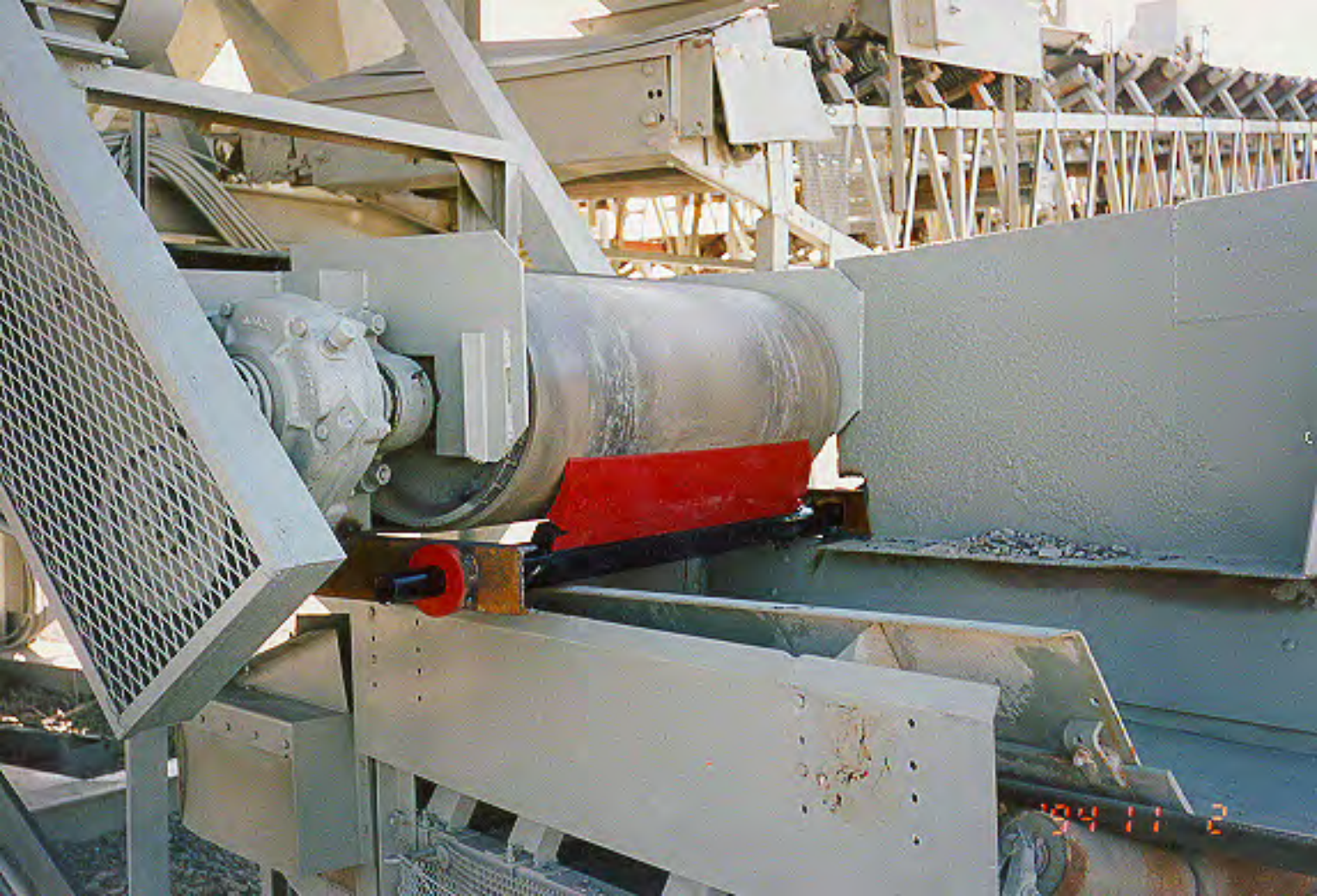


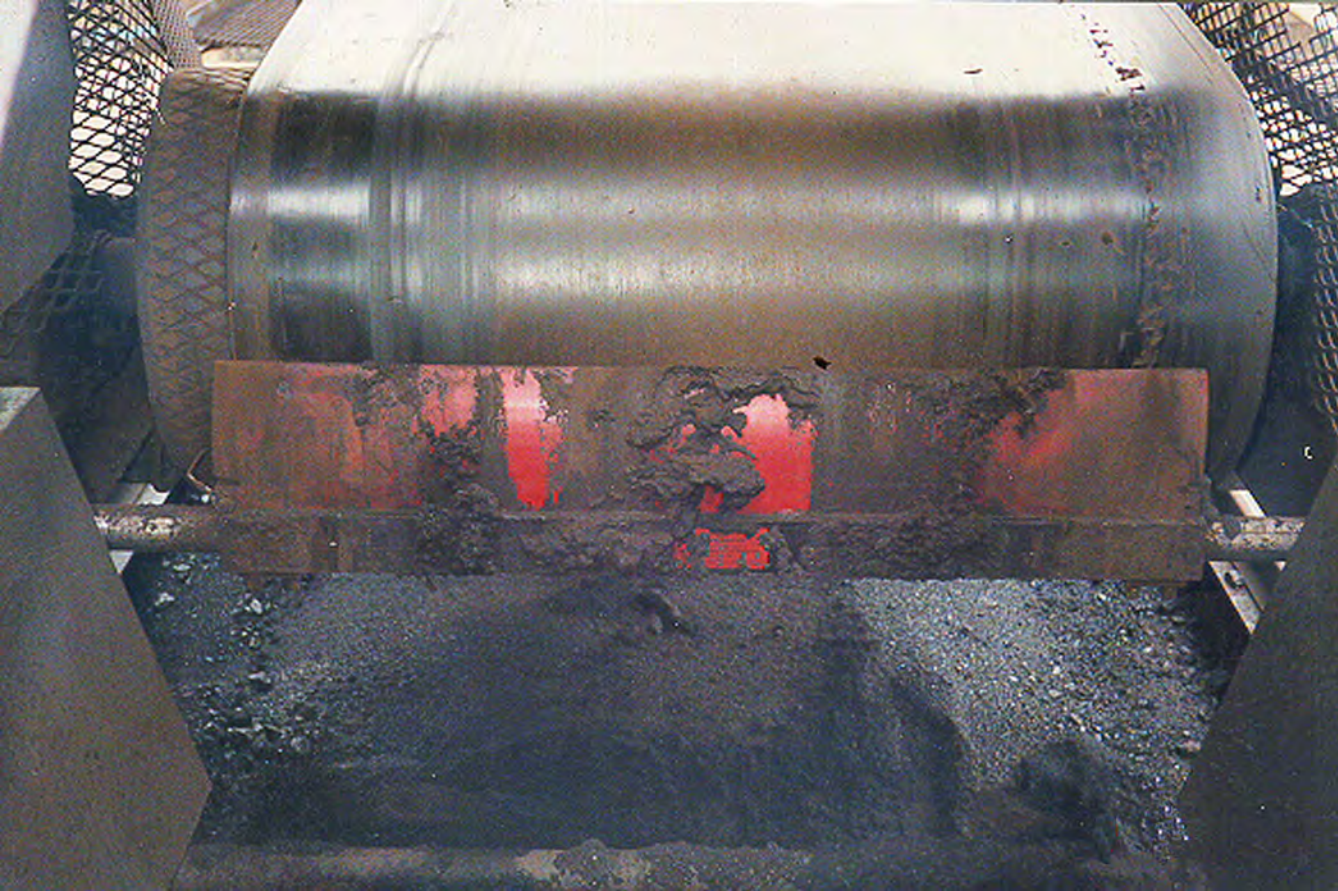
17 6:43




'93 2 2









A close-up photograph of a conveyor belt pulley system. The pulley is covered in a grey, textured rubber lagging. A metal scraper blade is positioned to clean the lagging. To the left of the pulley, a metal structure is visible, and a stream of dark, granular material is falling from it. The text is overlaid in red on the right side of the image.

**ARCH SABER PRIMARY CLEANERS
REMOVE CARRYBACK AT THE HEAD
PULLEY AND ALLOW THE
MATERIAL TO FALL INTO THE BULK FLOW**





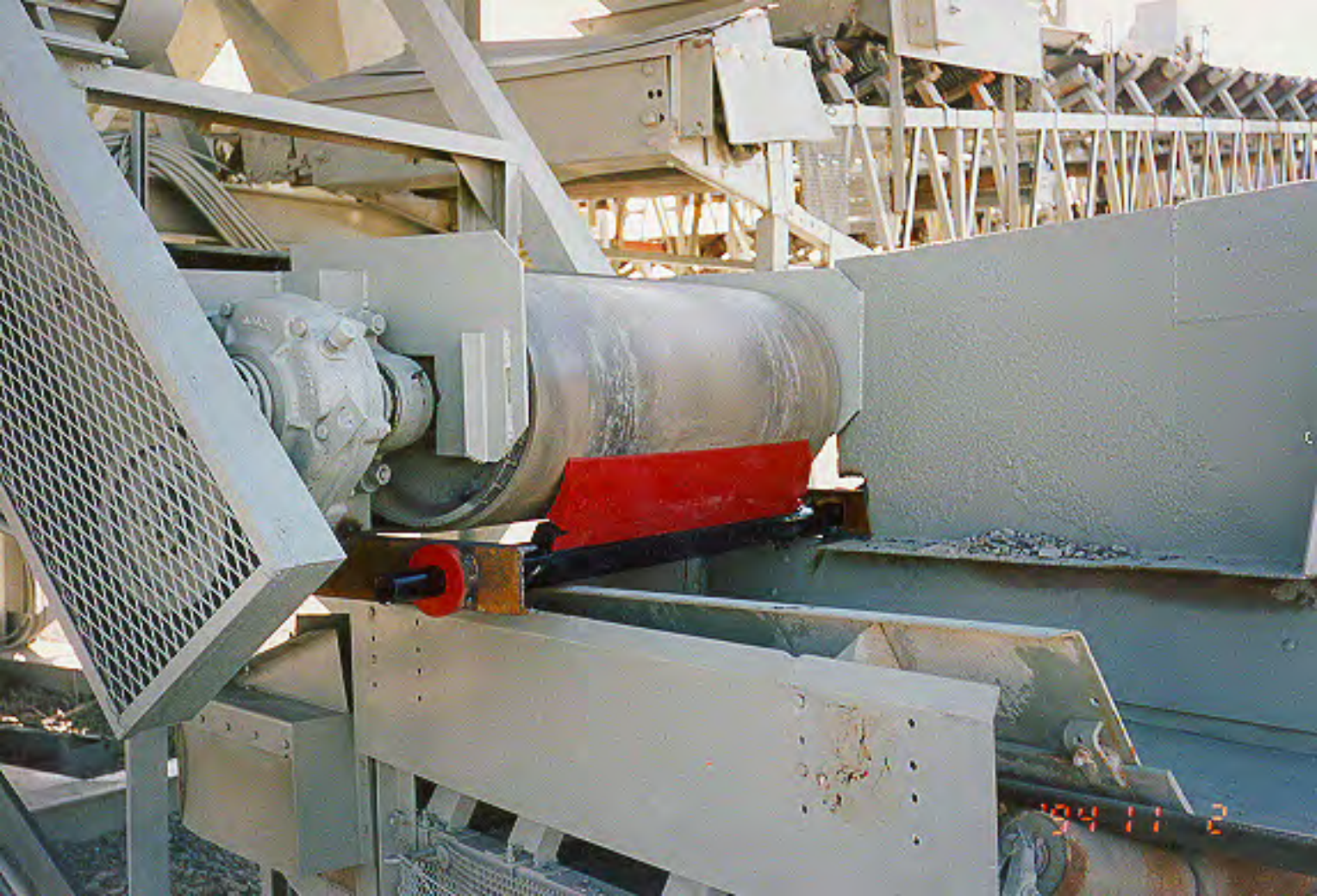


17 6:43



'93 2 2







**Mechanical splices pass with
ease.**





**Mechanical splices pass with
ease.**

