

Who is Arch Environmental?

*manufacturer and worldwide distributor of preferred bulk conveyor components since 1975

Mechanical Division

Belt Cleaners • Belt Alignment • Sealing Systems • Dust Control Systems • Impact/Slider Systems

Electrical Division

Belt Scales • Metal Detectors • Pull Cord Switches • Belt Protection Devices • Conveyor Control Systems

*facilities include a fabrication shop, a CNC machine shop, and state-of-the-art urethane production



Double-click for more application photos

Patented *Twister Tensioner*® maintains consistent blade-to-belt pressure and its core is **GUARANTEED FOR LIFE!**

Requires only 4 1/2" of mounting space.

Extends life of belts and idlers by efficiently removing carryback at the head pulley.

Reduces costs associated with conveyor wear-and-tear and spillage cleanup.

Curved blade aggressively attacks stubborn carryback and is safe for mechanical splices.

Constant re-tensioning not required.

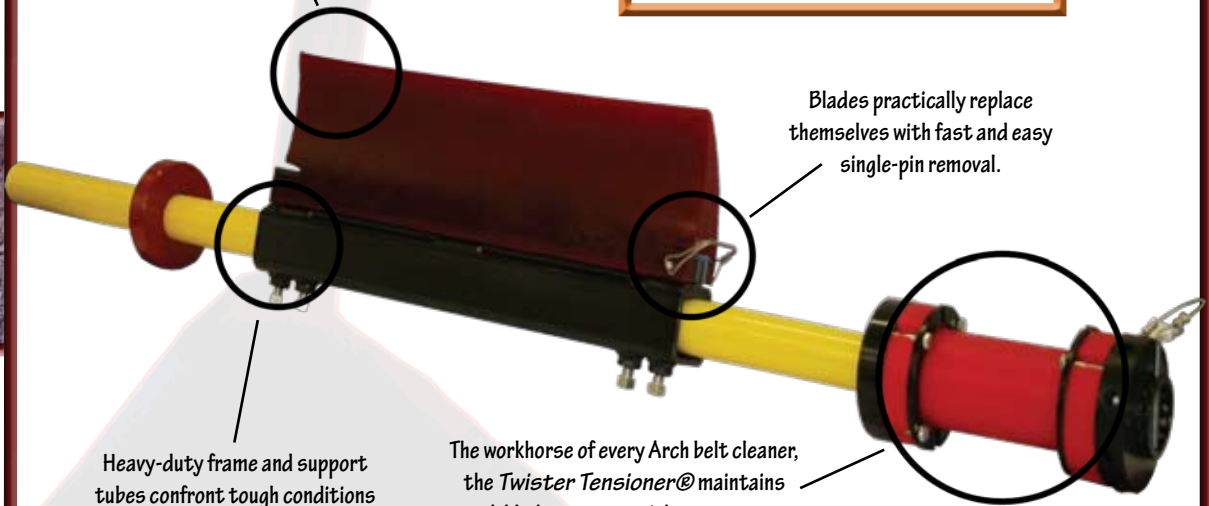
Multiple blade options include high-temperature, high-moisture, high-speed, and food-grade.

ARCH SABER PRIMARY® CLEANER

- EZ Installation ✓
- CAD Drawings (PDF) ✓
- Worksheet ✓
- 'See for Yourself' ✓
- Low Maintenance ✓
- Splice Safe ✓
- Heavy-Duty ✓
- Fast Delivery ✓

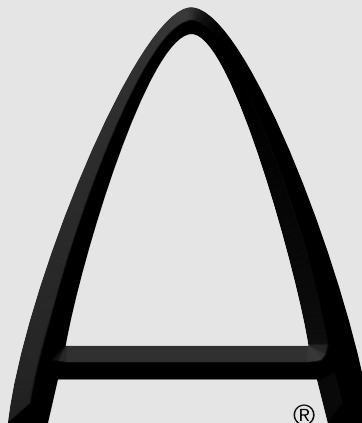
Stout, single-piece polyurethane blade is unforgiving to harmful carryback, but equally gentle on mechanical splices.

Blades practically replace themselves with fast and easy single-pin removal.



Heavy-duty frame and support tubes confront tough conditions with even tougher performance.

The workhorse of every Arch belt cleaner, the *Twister Tensioner*® maintains peak blade pressure without constant manual re-tensioning.



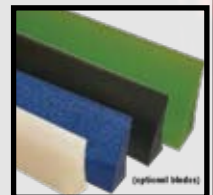
(Conveying Confidence from Tail to Head)

ARCH ENVIRONMENTAL EQUIPMENT, INC.

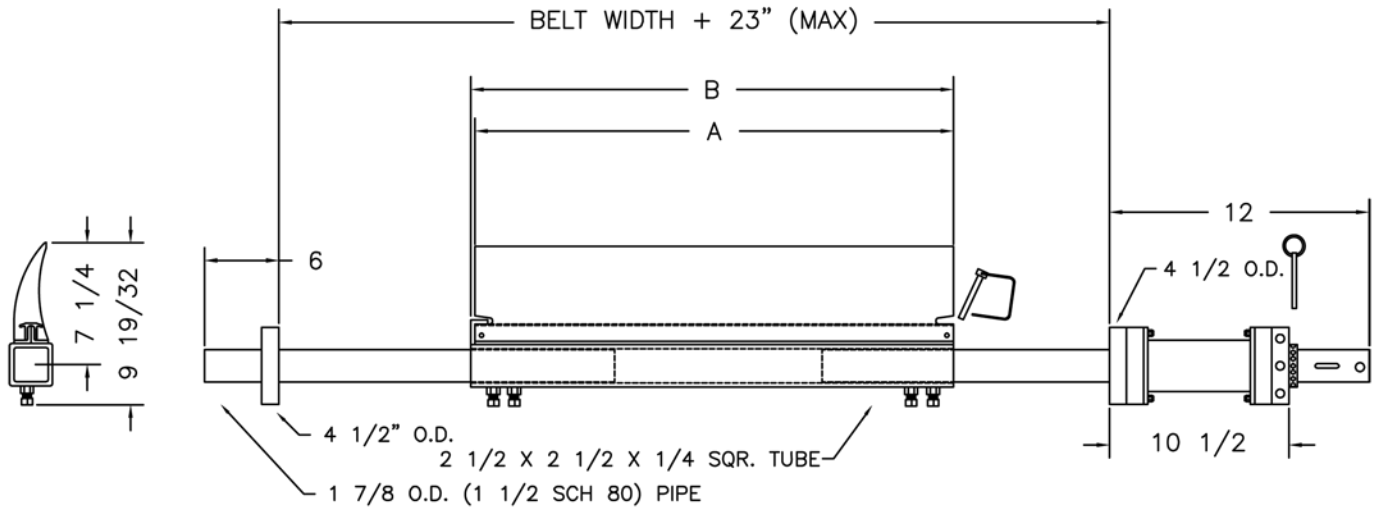
CONVEYOR EFFICIENCY SPECIALISTS

800-553-4567

www.archenv.com



ARCH SABER PRIMARY CLEANER



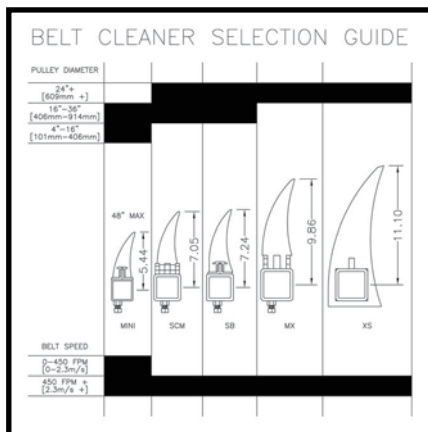
BELT WIDTH	SABER PRIMARY BELT CLEANER		
	A	B	ORDER #
18	16	16 1/2	MCNSB000180000180TA000000000000
24	22	22 1/2	MCNSB000240000240TA000000000000
30	28	28 1/2	MCNSB000300000300TA000000000000
36	34	34 1/2	MCNSB000360000360TA000000000000
42	40	40 1/2	MCNSB000420000420TA000000000000
48	46	46 1/2	MCNSB000480000480TA000000000000
54	52	52 1/2	MCNSB000540000540TA000000000000
60	58	58 1/2	MCNSB000600000600TA000000000000
66	64	64 1/2	MCNSB000660000660TA000000000000
72	70	70 1/2	MCNSB000720000720TA000000000HPO
84	82	82 1/2	MCNSB000840000840DT00100000HPO
96	94	94 1/2	MCNSB000960000960DT00100000HPO

THE FOLLOWING OPTIONS ARE AVAILABLE:

SS : STAINLESS PIPES
 SM : SS FRAME
 HP : HEAVY PIPES
 (SCH. 160 PIPE)

GZ : GREASE FITTING
 CB : CERAMIC BLADE
 XT : HIGH TEMP. BLADE

WH : WHITE BLADE
 F : FULL BLADE



<p>Standard Blade Red Temp. Range: 180-220°F</p> <p>High-Moisture Blade Gray Temp. Range: 180-220°F 15%+ Moisture Content</p> <p>Ceramic Blade Blue High Friction/High Speed 750+ ft./min.</p> <p>High Temperature Blade Green Temp. Range: up to 300°F</p> <p>Non-pigment Blade White Same as Standard Red Blade Ideal for color-sensitive material (ie. Borax, Soap, etc.)</p> <p>Food Grade Blade Natural FDA approved for mild contact with food products</p>
--



Covered under one or more of the following patents:
 4,202,437; 4,231,471; 4,436,446; 4,489,823; 4,533,036; 4,779,716; 4,877,125;
 4,989,727; 5,149,305; 5,222,588; 5,222,589; 5,219,063; 5,350,053; 5,725,083;
 other patents pending

Note: If available, prices vary with options.