

# ARCH ENVIRONMENTAL EQUIPMENT, INC.

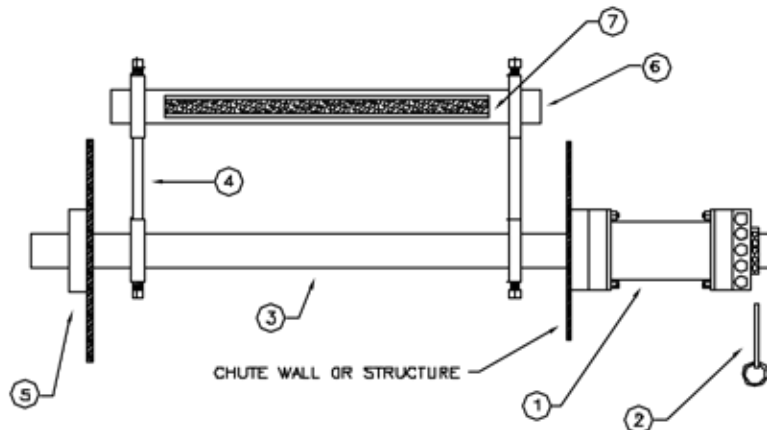
1-800-553-4567 PADUCAH, KENTUCKY FAX: 800-230-9462

## SABER SECONDARY "SC" INSTALLATION INSTRUCTIONS

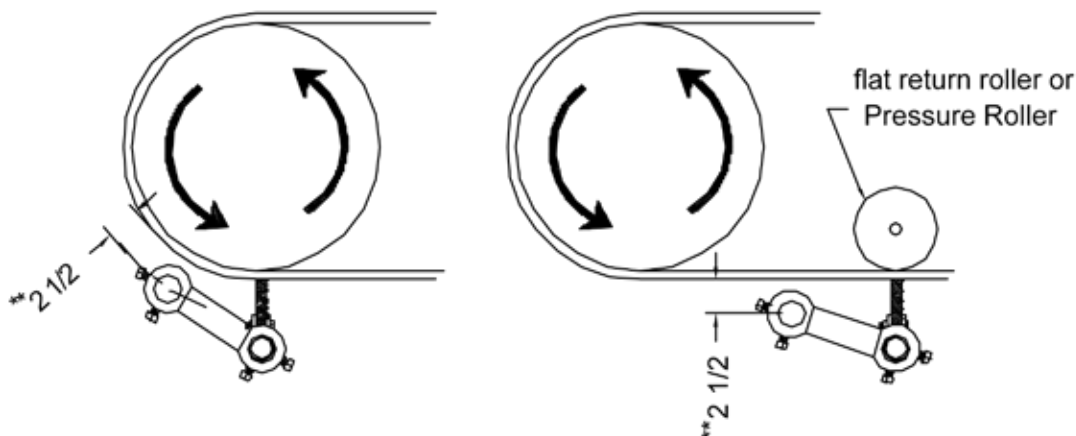
### TOOLS NEEDED:

CUTTING TORCH  
WELDER  
ADJUSTABLE WRENCH  
TAPE MEASURE  
CHALK

SHUT DOWN AND LOCKOUT CONVEYOR BEFORE  
DOING ANY MAINTENANCE

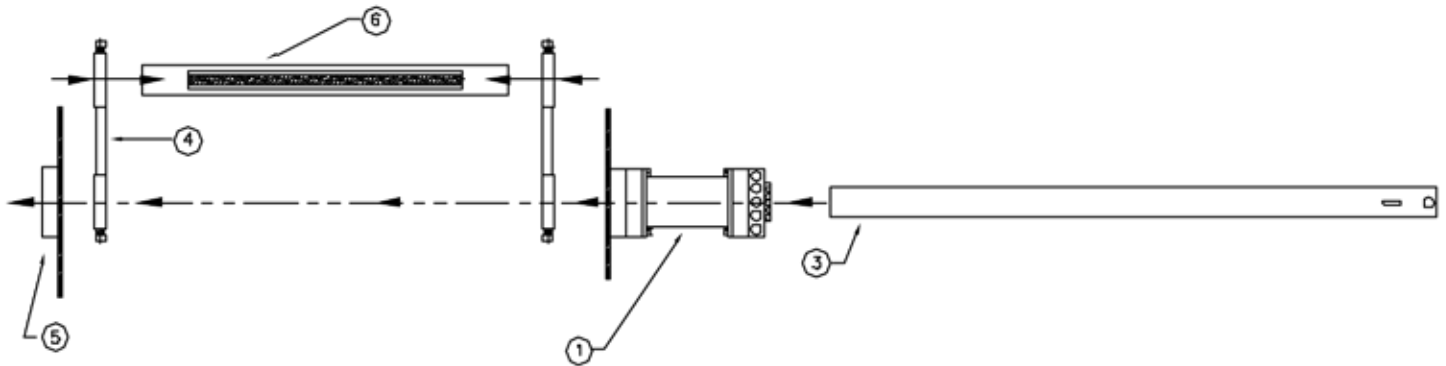


- 1) The "SC" cleaning blade should be mounted as close as possible to the point where the belt leaves the head pulley. If this is not possible, the cleaner should be mounted under a flat return roller. The centerline of the tensioner pipe should be located 2 1/2" (63.5 mm) away from the face of the conveyor belt. After the location of the tensioner pipe is determined, a 3" (76.2 mm) diameter hole should be cut in the structure (if no structure is available, you may have to fabricate the mounting structure on sight. Keep in mind, you need at least 4 3/4" (120.65 mm) of area to mount this cleaner.) please see diagram below



\*\* this is minimum distance

2) After the holes are cut, you need to weld the tensioner (item 1) and the support hub (item 5) on opposite sides of the structure. When complete, slide the tensioner pipe (item 3) through the tensioner, across the conveyor, through both pivot arm (item 4), and through the support hub. (note: make sure the slots in the tensioner pipe are on the side of the conveyor where you welded the tensioner).



3) Now you need to install the mainframe (item 6) in the pivot arms (item 4). Do this by sliding the pivot arm over either end of the mainframe. Tighten the set screws against the tensioner pipe (item 3) and rotate the cleaner assembly up to the belt. Rotate the mainframe until the blade is perpendicular to the belt and tighten the set screws against the mainframe.

4) You are ready to tension the cleaner. This is done by rotating the tensioner (using provided tensioning tool) in the direction of the belt travel. Rotate the tensioner until you can see the second hole on the tensioner align with the slot in the tensioner pipe. Now place the shear pin through the tensioner and the tensioner pipe.

