

*Who is Arch Environmental?*

\*manufacturer and worldwide distributor of preferred bulk conveyor components since 1975

**Mechanical Division**

*Belt Cleaners•Belt Alignment•Sealing Systems•Dust Control Systems•Impact/Slider Systems*

**Electrical Division**

*Belt Scales•Metal Detectors•Pull Cord Switches•Belt Protection Devices•Conveyor Control Systems*

\*facilities include a fabrication shop, a CNC machine shop, and state-of-the-art urethane production



Torsion mounts available in mini, standard and heavy-duty options.

Single-unit compact design requires minimal space for installation (13.8"X 7.1").

Range of metal scrapers available to suit any application.

Torsion holder assembly allows mechanical splices to pass without harm to the blade.

Suitable for all belt widths and speeds.

Increases belt and idler life eliminating sticky carryback.

Reduces operating costs by extending the life of vital conveyor components.

# RBS SECONDARY CLEANER®

Ultra-stable double-arm design reduces chattermarks and belt damage by eliminating blade oscillation; lightweight components ensure optimum blade contact and minimal return force after deflection.

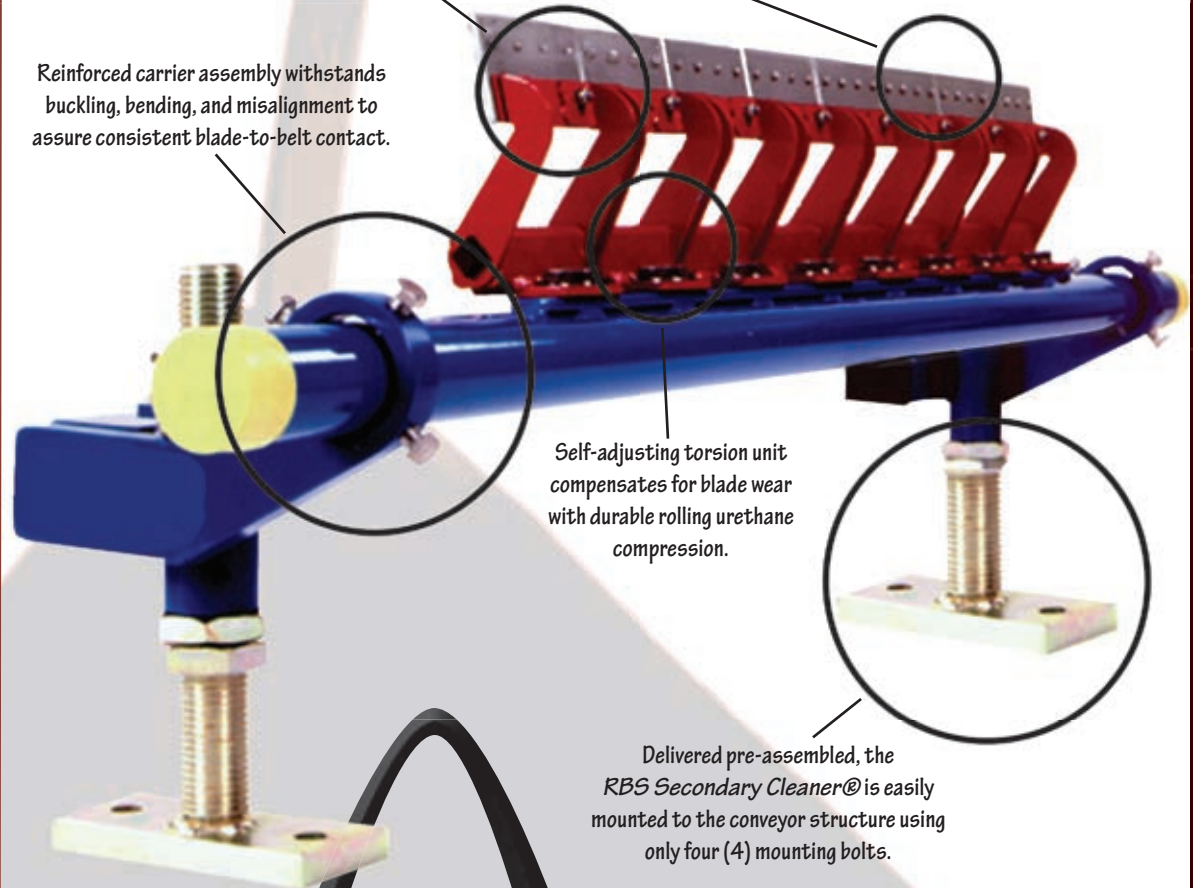
Cantilever design provides consistent blade-to-belt pressure and is easily installed in tight spaces.

Reinforced carrier assembly withstands buckling, bending, and misalignment to assure consistent blade-to-belt contact.

Self-adjusting torsion unit compensates for blade wear with durable rolling urethane compression.

Delivered pre-assembled, the RBS Secondary Cleaner® is easily mounted to the conveyor structure using only four (4) mounting bolts.

- |                        |   |
|------------------------|---|
| <b>EZ Installation</b> | ✓ |
| <b>Low Maintenance</b> | ✓ |
| <b>Metal Blade</b>     | ✓ |
| <b>Fast Delivery</b>   | ✓ |
| <b>Worksheet Req'd</b> | ✓ |



**(Conveying Confidence from Tail to Head)**

**ARCH**  
**ENVIRONMENTAL**  
**EQUIPMENT, INC.**

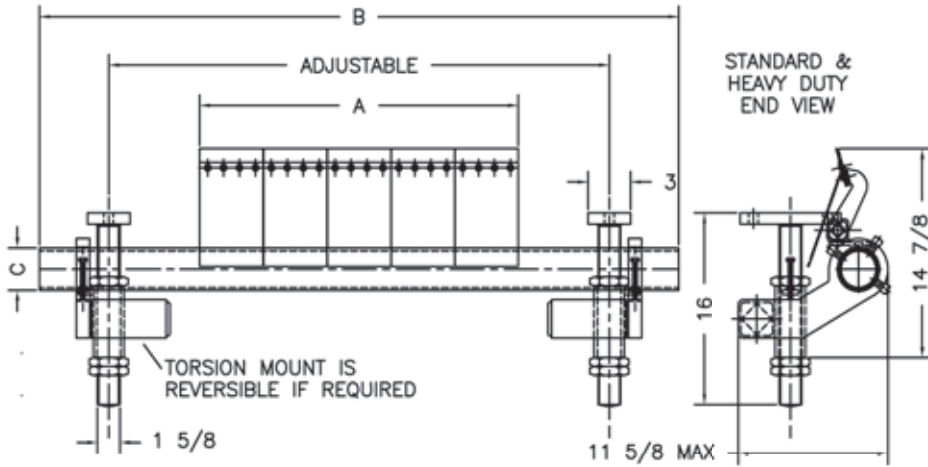
CONVEYOR EFFICIENCY SPECIALISTS

800-553-4567

www.archenv.com

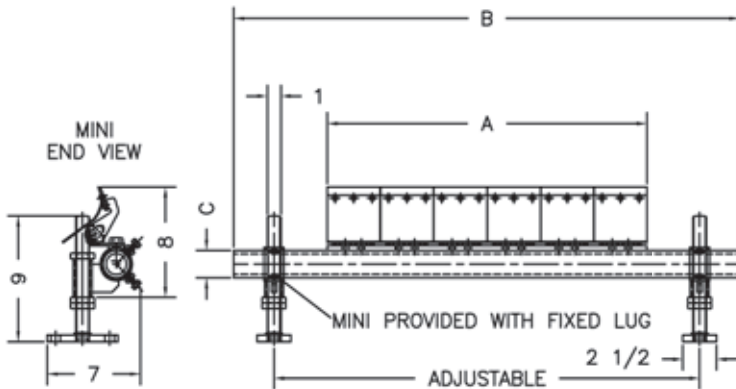


# Standard and Heavy Duty Dimensions



BELT WIDTH	ARCH/RBS SD & HD CLEANER			
	ALL DIMENSIONS IN INCHES			BLADE QTY
	A	B	C	
24	19	78	2 3/8	4
30	28 3/8	78	2 3/8	6
36	33	78	2 3/8	7
42	37 7/8	78	2 3/8	8
48	42 1/2	98	2 7/8	9
54	52	98	2 7/8	11
60	56 3/4	98	2 7/8	12
72	63 1/8	118	4	14
84	80 3/8	118	4	17

## Mini Dimensions



BELT WIDTH	ARCH/RBS MINI BELT CLEANER			
	ALL DIMENSIONS IN INCHES			BLADE QTY
	A	B	C	
18	15 7/8	35	1 7/8	4
24	23 3/4	55	1 7/8	6
30	27 5/8	59	1 7/8	7
36	35 1/2	86	1 7/8	9
42	39 1/2	86	1 7/8	10
48	47 3/8	98	1 7/8	12

ARCH/RBS SECONDARY CLEANER PART NUMBERS			
ORDERING INFORMATION			
MAM**++---00			
	**STYLE: MN = MINI SD = STANDARD HD = HEAVY	++ BLADE: C1 TC 3T TS	BELT WIDTH

(Example: MAMSDT303600)

Blade style to be determined by the factory based upon application data provided by the customer.

Please complete the Belt Cleaner Worksheet prior to quotations to insure proper selection of blade and frame components.

### PRINCIPLE OF OPERATION:

The leading edge of the blade is directly above the fulcrum point, allowing the blade to deflect on a radius from the center of the torsion unit in the direction that the belt is travelling. This allows the blade to let the obstruction pass without damage to the belt or cleaner.

