

Who is Arch Environmental?

*manufacturer and worldwide distributor of preferred bulk conveyor components since 1975

Mechanical Division

Belt Cleaners • Belt Alignment • Sealing Systems • Dust Control Systems • Impact/Slider Systems

Electrical Division

Belt Scales • Metal Detectors • Pull Cord Switches • Belt Protection Devices • Conveyor Control Systems

*facilities include a fabrication shop, a CNC machine shop, and state-of-the-art urethane production



ArchWeigh HP® Belt Scales provide long-term repeatability without recalibration.

Accurately measures *only* material on the belt and eliminates the force of the moving belt.

A complete scale carriage, not a 'do-it-yourself' kit.

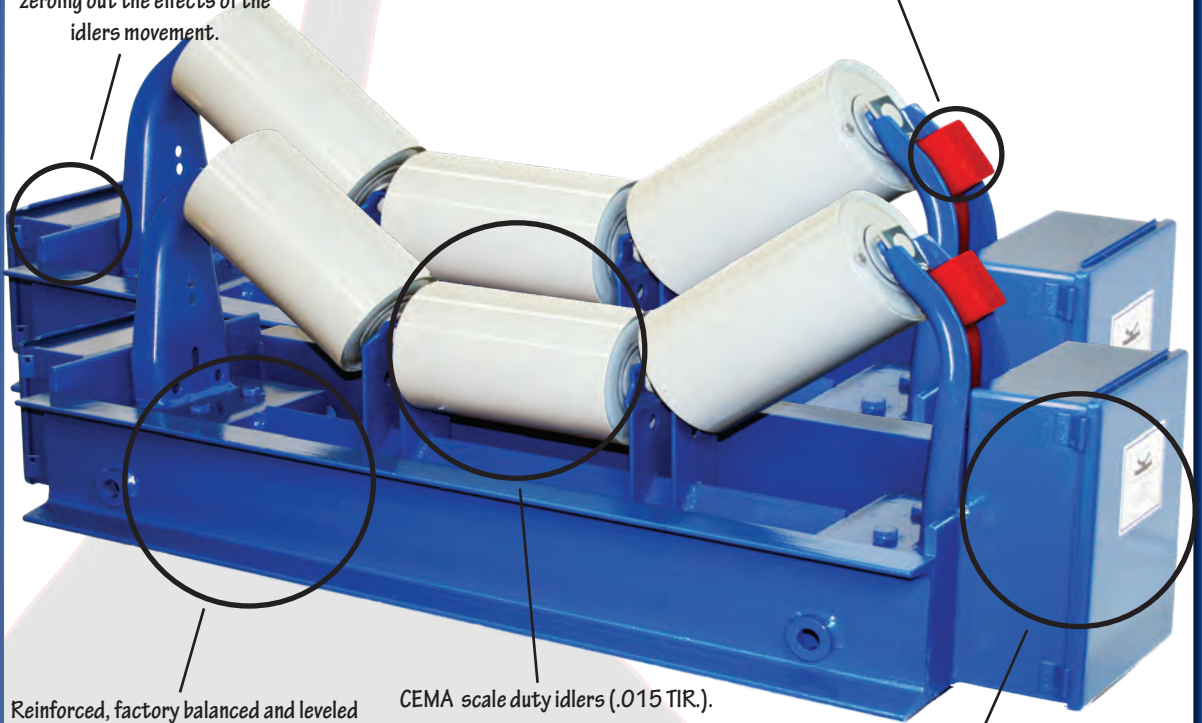
Unique dual load cell design allows for a positive/negative response to account for normal conveyor variance.

Unitized bridge construction and internal speed sensor allow for one time 'Bolt-in-Place' installation.

ARCHWEIGH DUAL HP® BELT SCALE

Patented ArchWeigh® dual load cells (4 total) assure accuracies of up to +/- .25% by automatically zeroing out the effects of the idlers movement.

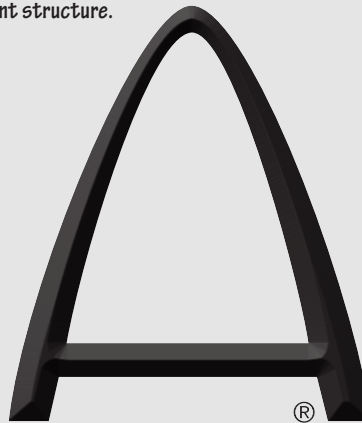
Two speed units precisely measures belt speed. Internal housing means once the carriages are installed, so are the speed units.



Reinforced, factory balanced and leveled frame eliminates the common problems associated with insufficient structure.

CEMA scale duty idlers (.015 TIR.).

Oversized junction boxes for field connections.



ARCH
ENVIRONMENTAL
EQUIPMENT, INC.

CONVEYOR EFFICIENCY SPECIALISTS

800-553-4567

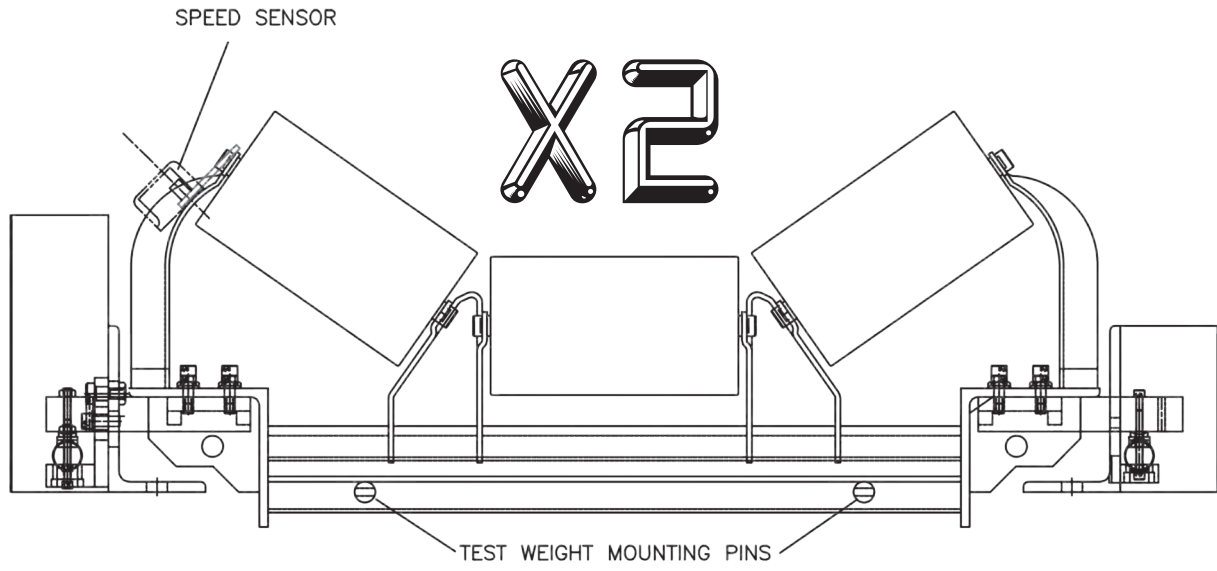
www.archenv.com

EZ Installation ✓
Low Maintenance ✓
Super Heavy-Duty ✓
Fast Delivery ✓
Worksheet Req'd ✓

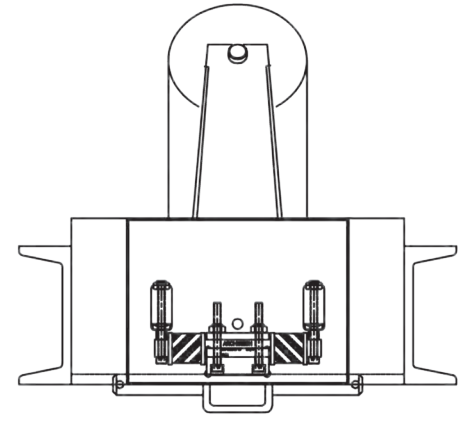
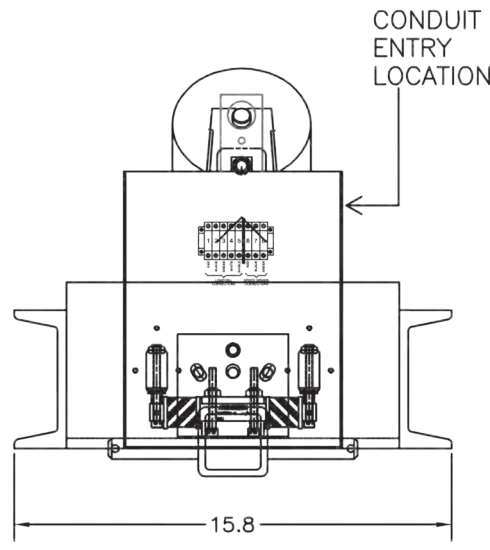
(Conveying Confidence)



ARCHWEIGH DUAL HP® BELT SCALE



CHANNEL REMOVED FROM SIDE VIEW FOR CLARITY



Scale Idler
 Roll Tolerance: 0.015 in. TIR
 Bearings: Sealed Ball
 Specifications: CEMA

Load Cells
 Quantity: 2 double-ended shear beams
 (4 total load cells)
 Excitation: 10DVC
 Output: 3 mV/V (+/- .25%)
 Non-linearity (FSO): <0.03%
 Non-repeatability (FSO): <0.03%
 Hysteresis (FSO): <0.05%

Speed Sensor
 Type: Hall Effect
 Mounting: Outboard Wing Roll
 Voltage: 24 VDC
 Output: 20 mA



Covered under one or more of the following patents:
 4,202,437; 4,231,471; 4,436,446; 4,489,823; 4,533,036; 4,779,716; 4,877,125;
 4,989,727; 5,149,305; 5,222,588; 5,222,589; 5,219,063; 5,350,053; 5,725,083
 other patents pending

Note: If available, prices vary with options.